

PIR3 with socket GZM3 interface relays



R3 + GZM3

- Interface relay **PIR3 with socket GZM3** consists of: electromagnetic relay **R3**, grey plug-in socket **GZM3**, signalling / protecting module: version **LD** - M41G or M42G or M43G (L - LED green, D - diode, polarization N: +A1/-A2); version **LV** - M91G or M92G or M93G (L - LED green, V - varistor), retainer / retractor clip **GZT4-0040** (plastic), white description plate **GZT4-0035**
- 35 mm rail mount acc. to PN-EN 60715 or on panel mounting with two M3 screws
- May be linked with interconnection strip type **ZGGZ4** • Recognitions, certifications, directives: recognitions R3, RoHS, AUCOTEAM GmbH Berlin - railway standards,

Contact data

Number and type of contacts		3 CO		CE
Contact material		AgNi		
Rated / max. switching voltage	AC	250 V / 440 V		
Min. switching voltage		5 V		
Rated load (capacity)	AC1	10 A / 250 V AC		
	AC15	3 A / 120 V 1,5 A / 240 V (B300)		
	AC3	370 W (single-phase motor)		
	DC1	10 A / 24 V DC (see Fig. 3)		
	DC13	0,22 A / 120 V 0,1 A / 250 V (R300)		
Min. switching current		5 mA		
Max. inrush current		20 A		
Rated current		10 A		
Max. breaking capacity	AC1	2 500 VA		
Min. breaking capacity		0,3 W		
Contact resistance		≤ 100 mΩ		
Max. operating frequency	AC1	• at rated load	1 200 cycles/hour	
		• no load	18 000 cycles/hour	
Coil data				
Rated voltage	50/60 Hz AC	12 ... 230 V		
	DC	12 ... 110 V		
Must release voltage		AC: ≥ 0,2 U _n	DC: ≥ 0,1 U _n	
Operating range of supply voltage		see Tables 1,2		
Rated power consumption	AC	50 Hz: 1,6 VA	60 Hz: 1,3 VA	
	DC	0,9 W		
Insulation according to PN-EN 60664-1				
Insulation rated voltage		250 V AC		
Rated surge voltage		with AC coils: 2 500 V	1,2 / 50 μs	
		with DC coils: 4 000 V	1,2 / 50 μs	
Overvoltage category		III		
Insulation pollution degree		3		
Dielectric strength	• between coil and contacts	2 500 V AC	type of insulation: basic	
	• contact clearance	1 500 V AC	type of clearance: micro-disconnection	
	• pole - pole	2 500 V AC	type of insulation: basic	
Contact - coil distance	• clearance	≥ 2,5 mm		
	• creepage	≥ 4 mm		
General data				
Operating / release time (typical values)		AC: 10 ms / 8 ms	DC: 13 ms / 3 ms	
Electrical life	• resistive AC1	> 10 ⁵	10 A, 250 V AC	
	• cosφ	see Fig. 2		
Mechanical life (cycles)		> 2 x 10 ⁷		
Dimensions (L x W x H)		75 x 27 x 82 mm		
Weight		107 g		
Ambient temperature	• storage	-40...+85 °C		
	• operating	AC: -40...+55 °C	DC: -40...+70 °C	
Cover protection category		IP 20	PN-EN 60529	
Environmental protection		R3: RTI GZM3: RT0	PN-EN 116000-3	
Shock resistance	(NO/NC)	10 g / 5 g		
Vibration resistance		5 g 10...150 Hz		

The data in bold type pertain to the standard versions of the relays.

Coil data - DC voltage version

Table 1

Coil code	Rated voltage V DC	Coil resistance at 20 °C Ω	Acceptable resistance	Coil operating range V DC	
				min. (at 20 °C)	max. (at 55 °C)
012DC	12	160	± 10%	9,6	13,2
024DC	24	640	± 10%	19,2	26,4
048DC	48	2 600	± 10%	38,4	52,8
110DC	110	13 600	± 10%	88,0	121,0

The data in bold type pertain to the standard versions of the relays.

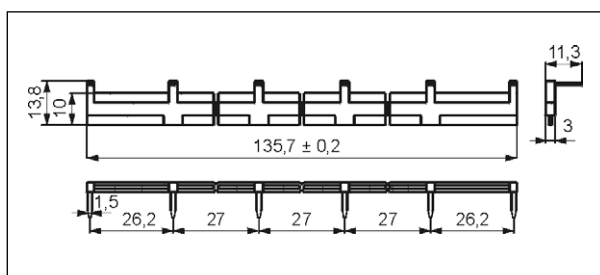
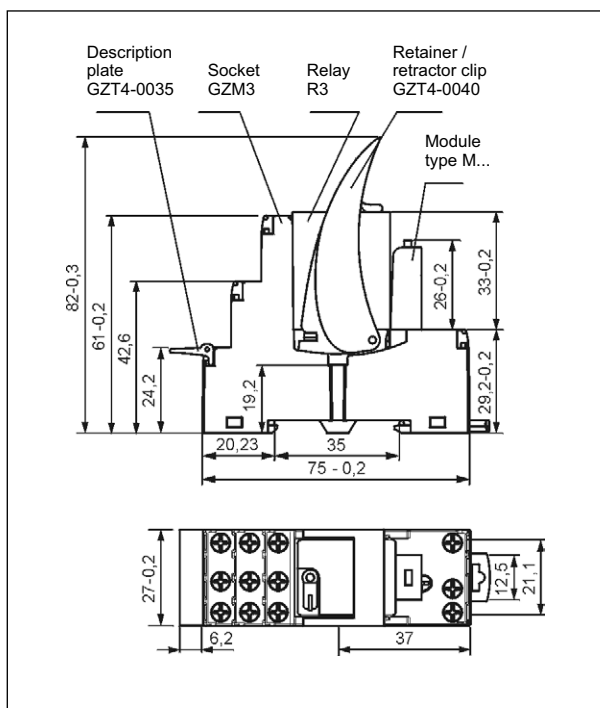
Coil data - AC 50/60 Hz voltage version

Table 2

Coil code	Rated voltage V AC	Coil resistance at 20 °C Ω	Acceptable resistance	Coil operating range V AC	
				min. (at 20 °C)	max. (at 55 °C)
012AC	12	39,5	± 10%	9,6	13,2
024AC	24	158	± 10%	19,2	26,4
048AC	48	640	± 10%	38,4	52,8
120AC	120	3 770	± 10%	96,0	132,0
230AC	230	16 100	± 10%	184,0	253,0

The data in bold type pertain to the standard versions of the relays.

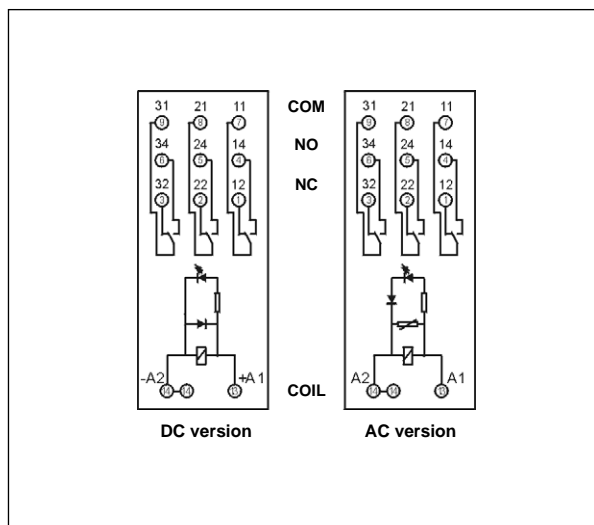
Dimensions



Interconnection strip type **ZGGZ4**

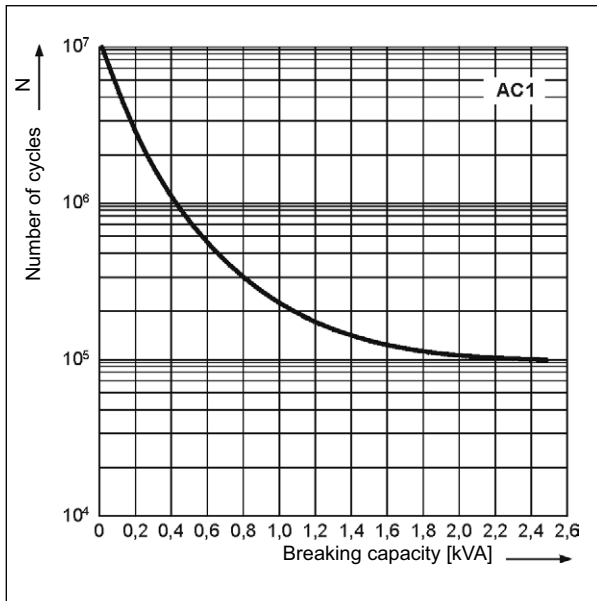
Connection diagrams

(screw terminals side view)



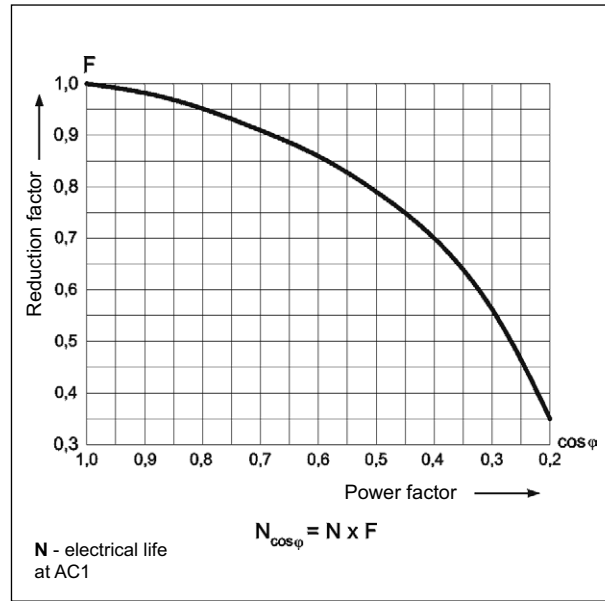
Electrical life at AC resistive load.
Switching frequency: 1 200 cycles/hour

Fig. 1



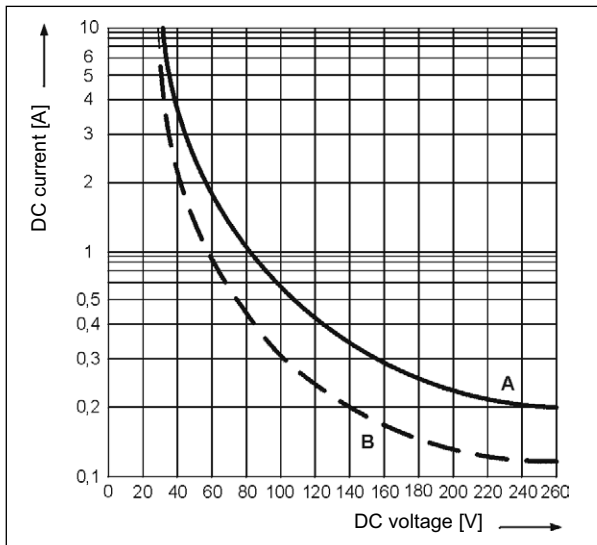
Electrical life reduction factor
at AC inductive load

Fig. 2



Max. DC breaking capacity
A - resistive load DC1
B - inductive load L/R = 40 ms

Fig. 3



Interconnection strips ZGGZ4



PIR2-...-00L.

ZGGZ4

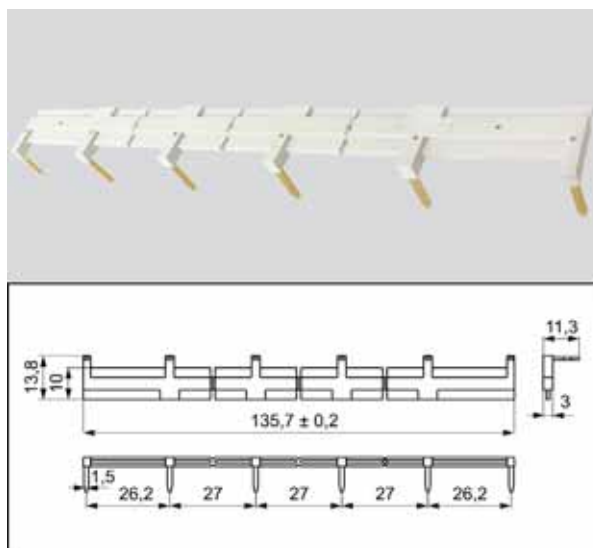
ZGGZ4 for:

Plug-in sockets	Relays for plug-in sockets	Interface relays ④
GZT2	R2...WT	PIR2-...-00L. (GZM2 + R2...WT)
GZM2		PIR3-...-00L. (GZM3 + R3...WT)
GZT3	R3...WT	PIR4-...-00L. (GZM4 + R4...WT)
GZM3		
GZT4	R4...WT	
GZM4		

④ Interface relay **PIR2 (PIR3, PIR4)** is offered as a **set**: plug-in socket **GZM2 (GZM3, GZM4)** + miniature industrial relay **R2 (R3, R4)** + signalling / protecting module **type M...** + retainer / retractor clip **GZT4-0040** + description plate **GZT4-0035**.

Interconnection strip ZGGZ4

- designed for the co-operation with plug-in sockets of miniature industrial relays and with interface relays PIR2, PIR3 and PIR4, which are equipped with screw terminals; sockets and relays are mounted on 35 mm rail mount acc. to PN-EN 60715,
- bridges common input signals (coil terminals A1 or A2) or output signals - see photo at the top,
- maximum permissible current is 10 A / 250 V AC,
- possibility of connection of 6 sockets or relays,
- colours of strips: **ZGGZ4-1** grey, **ZGGZ4-2** black.



11.05.2013